

Qty. Description

1 CRNE 155-1-1 V-F-A-E-HQQE



Note! Product picture may differ from actual product

Product No.: [92959226](#)

Vertical, multistage centrifugal pump with inlet and outlet ports on same the level (inline). Pump materials in contact with the liquid are in high-grade stainless steel. The Grundfos cartridge shaft seal ensures high reliability, safe handling, and easy access and service. Power transmission is via a rigid split coupling. Pipe connection is via DIN flanges.

The pump is fitted with a 3-phase, fan-cooled, permanent-magnet, synchronous motor. The motor efficiency is classified as IE5 in accordance with IEC 60034-30-2.

The motor includes a frequency converter and PI controller in the motor terminal box. This enables continuously variable control of the motor speed, which again enables adaptation of the performance to a given requirement.

Liquid:

Pumped liquid: Water
Liquid temperature range: -20 .. 120 °C
Selected liquid temperature: 20 °C
Density: 998.2 kg/m³

Technical:

Pump speed on which pump data are based: 3559 rpm
Rated flow: 186 m³/h
Rated head: 28 m
Pump orientation: Vertical
Shaft seal arrangement: Single
Code for shaft seal: HQQE
Approvals: CE,UKCA,SEPRO
Approvals for drinking water: ACS,WRAS
Curve tolerance: ISO9906:2012 3B

Materials:

Base: Stainless steel
EN 1.4408
ASTM A351 CF8M
Impeller: Stainless steel
EN 1.4401
AISI 316
Bearing: WC/WC
Support bearing: Graflon
Material certified according to: European standards

Installation:

Maximum ambient temperature: 50 °C
Maximum operating pressure: 16 bar
Max pressure at stated temp: 16 bar / 120 °C
Type of connection: DIN
Size of inlet connection: DN 150
Size of outlet connection: DN 150
Pressure rating for connection: PN 16



Company name:

Created by:

Phone:

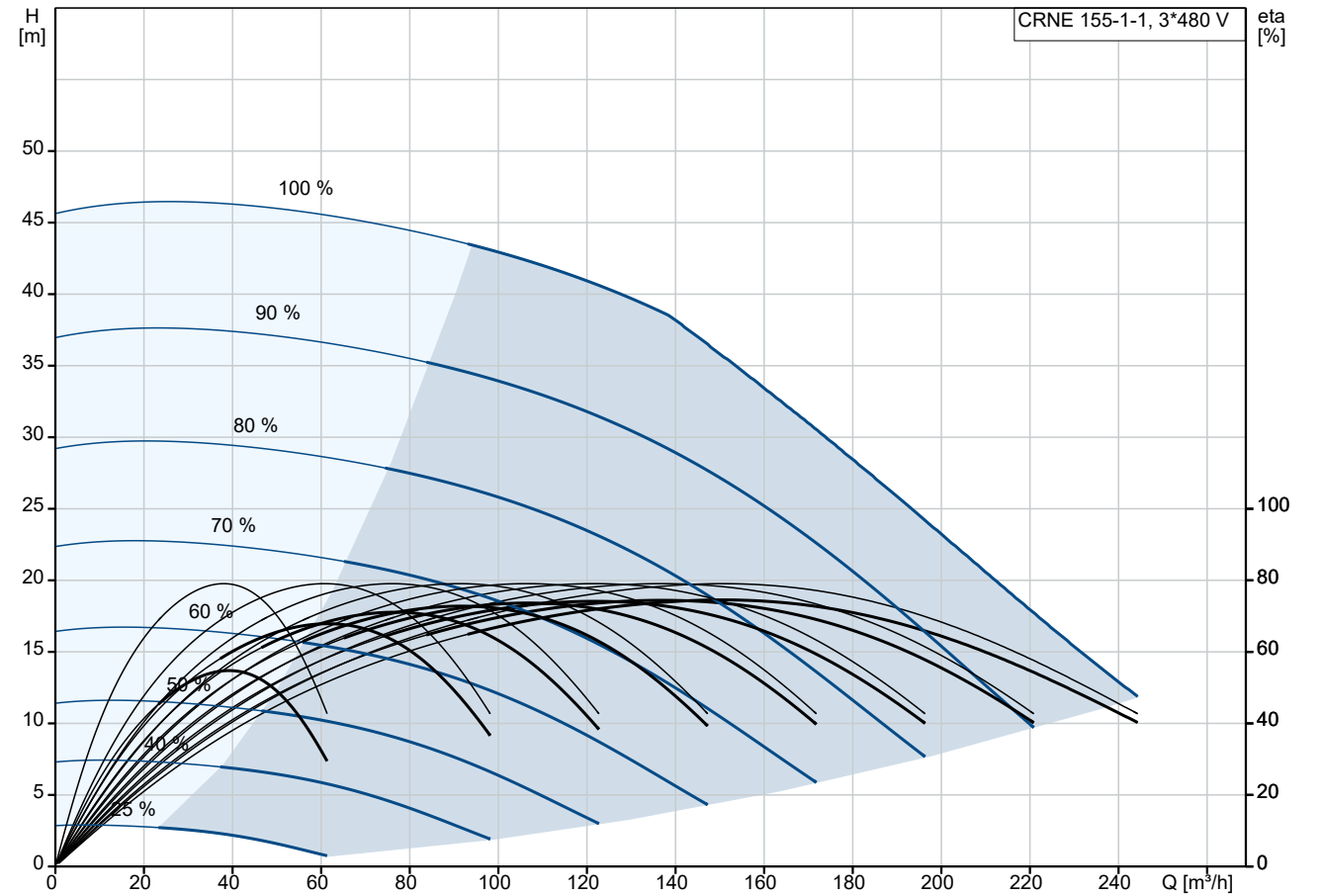
Date:

30/10/2024

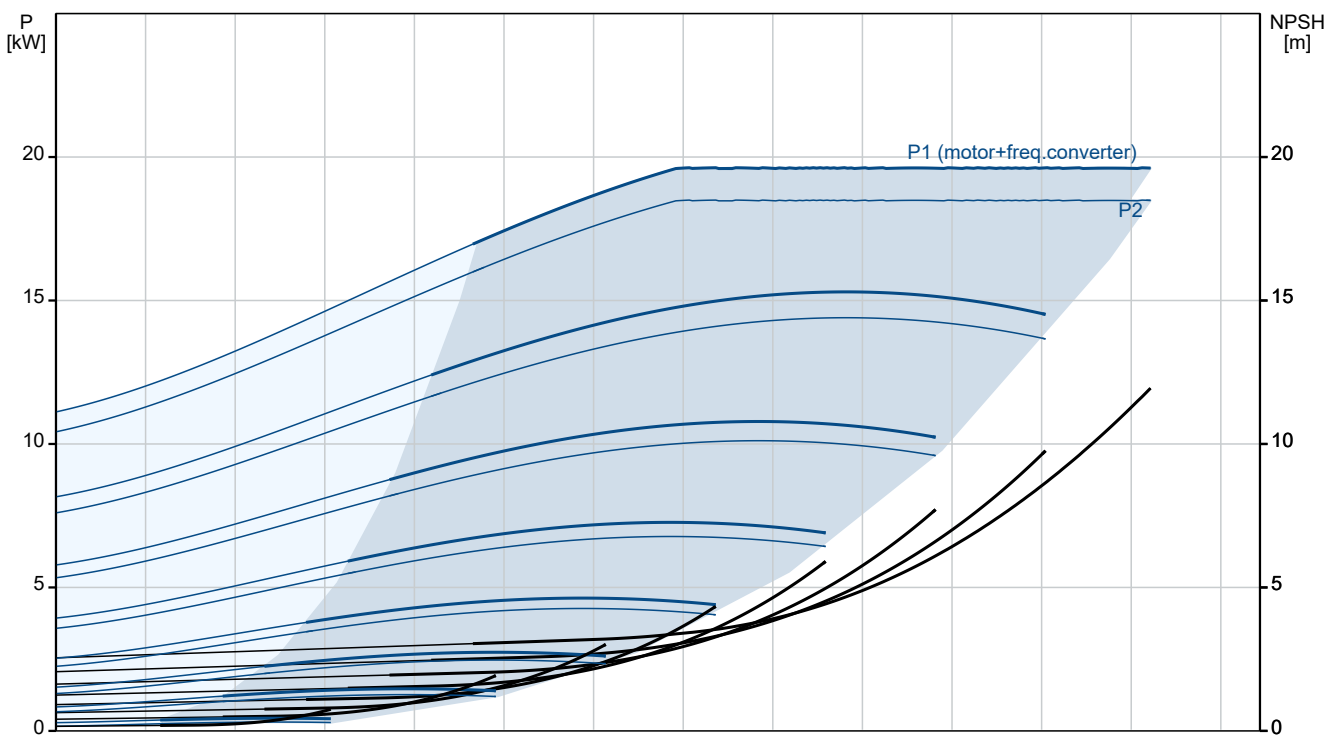
Qty.	Description
------	-------------

1	Flange size for motor: FF300
	Electrical data:
	Motor standard: IEC
	Motor type: 160LB
	Rated power - P2: 18.5 kW
	Power (P2) required by pump: 18.5 kW
	Over/undersize motor: Standard motor size
	Mains frequency: 50 / 60 Hz
	Rated voltage: 3 x 380-480 V
	Service factor: 0.00
	Rated current: 33.0-27.8 A
	Cos phi - power factor: 0.94-0.92
	Rated speed: 360-4000 rpm
	IE Efficiency class: IE5
	Motor efficiency at full load: 92.8 %
	Enclosure class (IEC 34-5): IP55
	Insulation class (IEC 85): F
	Motor No: 92917873
	Controls:
	Frequency converter: Built-in
	Pressure sensor: N
	Others:
	Terminal box position: 6
	Minimum efficiency index, MEI ≥: 0.70
	Net weight: 233 kg
	Gross weight: 302 kg
	Shipping volume: 1.14 m³
	Thrust handling device: N

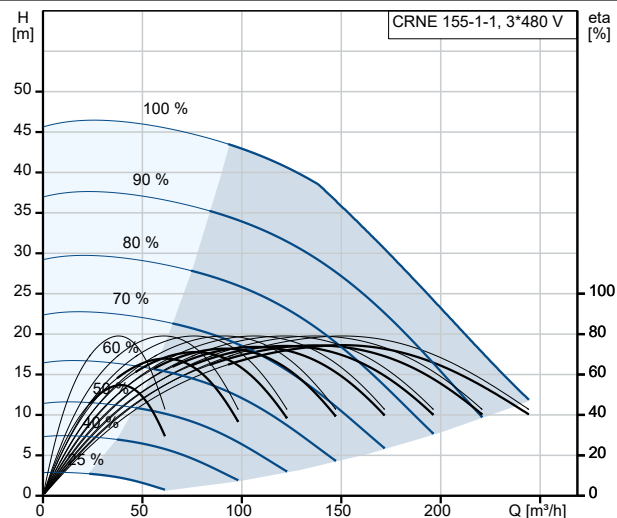
92959226 CRNE 155-1-1 V-F-A-E-HQQE



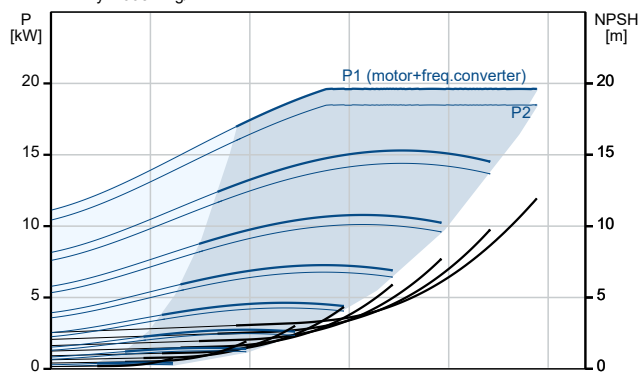
Pumped liquid = Water
 Liquid temperature during operation = 20 °C
 Density = 998.2 kg/m³



Description	Value
General information:	
Product name:	CRNE 155-1-1 V-F-A-E-HQQE
Product No:	92959226
EAN number:	5715122178005
Price:	
Technical:	
Pump speed on which pump data are based:	3559 rpm
Rated flow:	186 m³/h
Rated head:	28 m
Maximum head:	45.8 m
Impellers:	1
Number of reduced-diameter impellers:	1
Low NPSH:	N
Pump orientation:	Vertical
Shaft seal arrangement:	Single
Code for shaft seal:	HQQE
Approvals:	CE,UKCA,SEPRO
Approvals for drinking water:	ACS,WRAS
Curve tolerance:	ISO9906:2012 3B
Pump version:	V
Model:	A
Materials:	
Base:	Stainless steel
Base:	EN 1.4408
Base:	ASTM A351 CF8M
Impeller:	Stainless steel
Impeller:	EN 1.4401
Impeller:	AISI 316
Material code:	A
Code for rubber:	E
Bearing:	WC/WC
Support bearing:	Graflon
Material certified according to:	European standards
Installation:	
Maximum ambient temperature:	50 °C
Maximum operating pressure:	16 bar
Max pressure at stated temp:	16 bar / 120 °C
Type of connection:	DIN
Size of inlet connection:	DN 150
Size of outlet connection:	DN 150
Pressure rating for connection:	PN 16
Flange size for motor:	FF300
Connect code:	F
Liquid:	
Pumped liquid:	Water
Liquid temperature range:	-20 .. 120 °C
Selected liquid temperature:	20 °C
Density:	998.2 kg/m³
Electrical data:	
Motor standard:	IEC
Motor type:	160LB
Rated power - P2:	18.5 kW
Power (P2) required by pump:	18.5 kW
Over/undersize motor:	Standard motor size
Mains frequency:	50 / 60 Hz
Rated voltage:	3 x 380-480 V



Pumped liquid = Water
Liquid temperature during operation = 20 °C
Density = 998.2 kg/m³





Company name:

Created by:

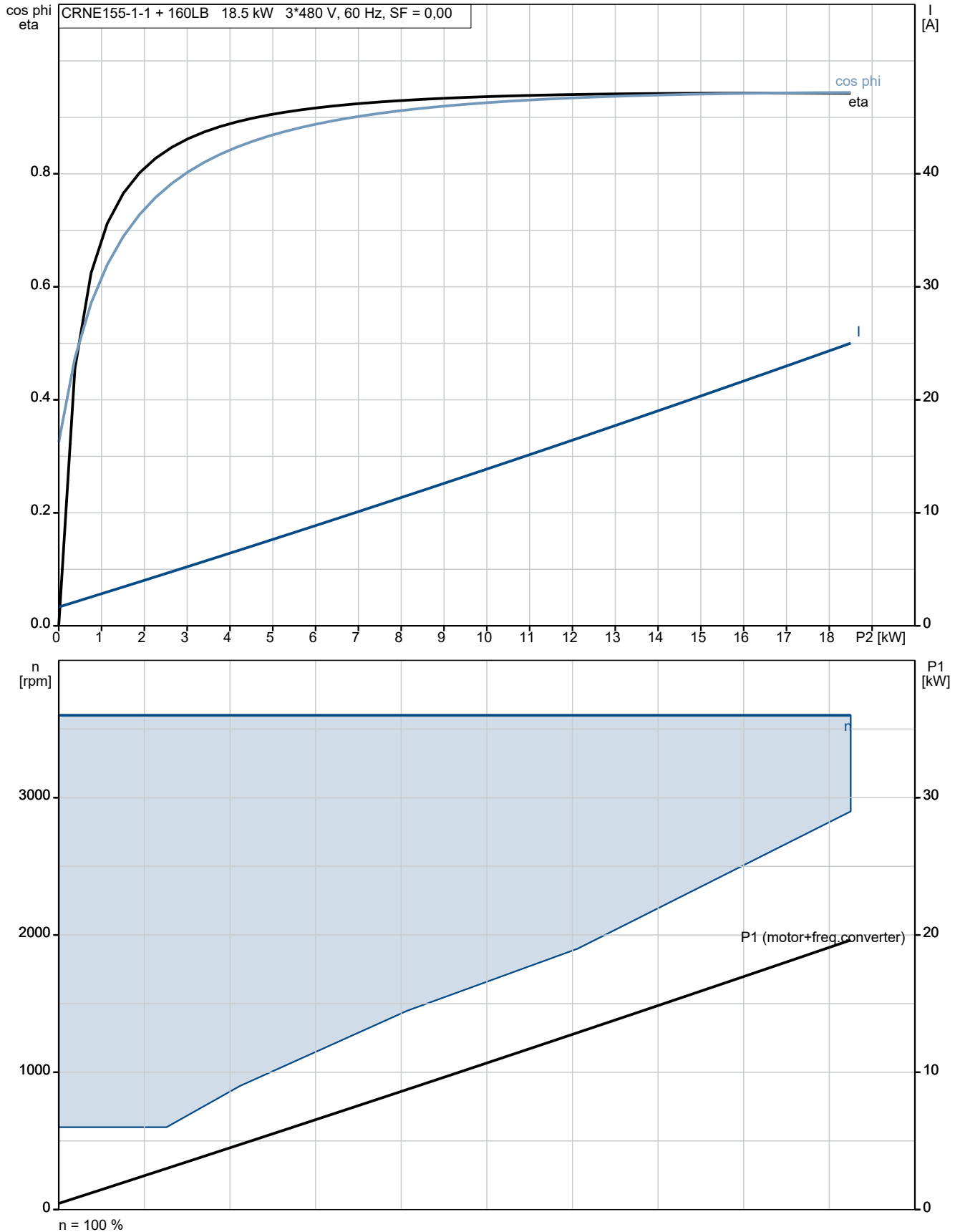
Phone:

Date:

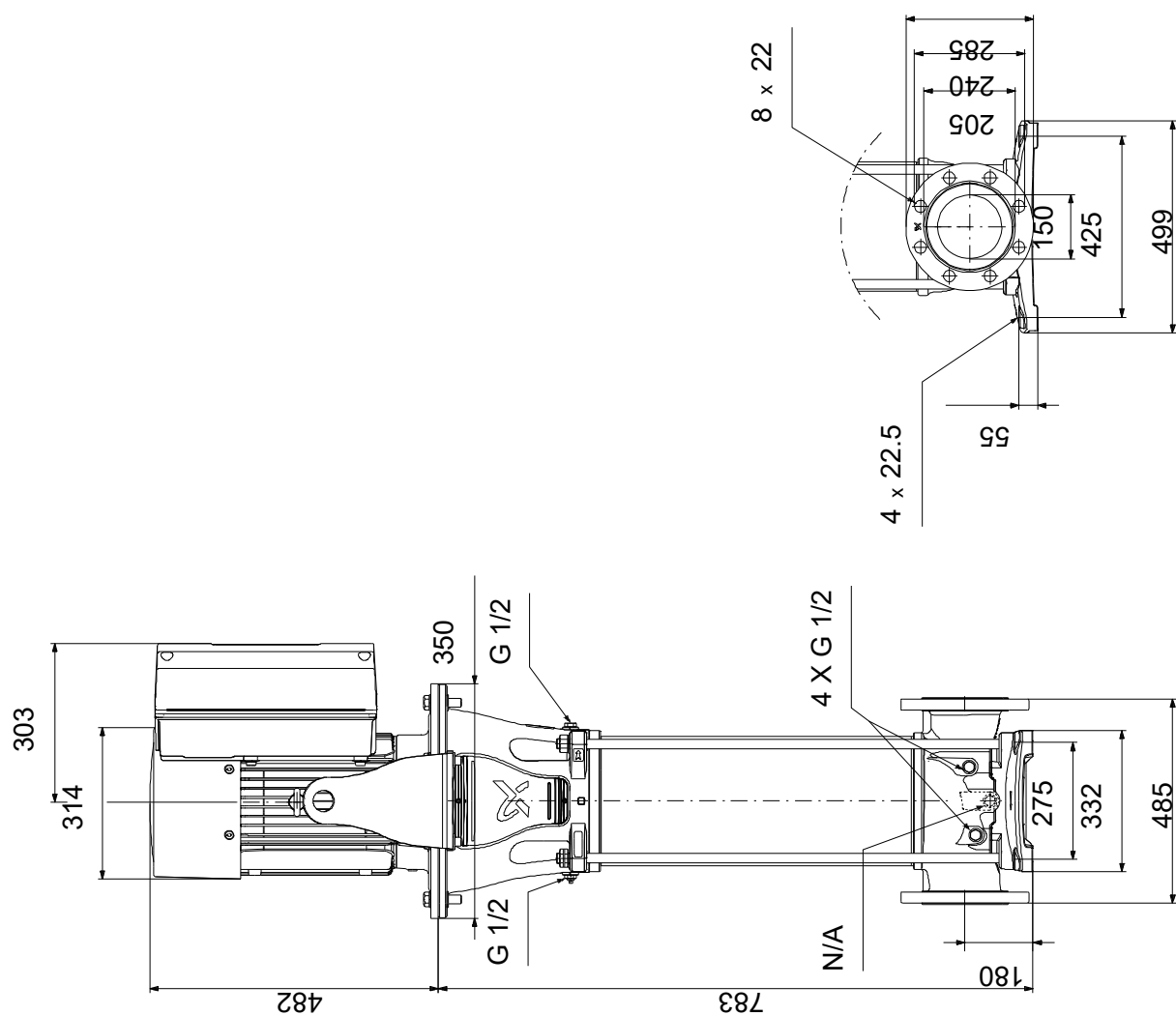
30/10/2024

Description	Value
Service factor:	0.00
Rated current:	33.0-27.8 A
Cos phi - power factor:	0.94-0.92
Rated speed:	360-4000 rpm
IE Efficiency class:	IE5
Motor efficiency at full load:	92.8 %
Enclosure class (IEC 34-5):	IP55
Insulation class (IEC 85):	F
Built-in motor protection:	ELEC
Motor No:	92917873
Controls:	
Function Module:	FM310 - Advanced
Frequency converter:	Built-in
Pressure sensor:	N
Others:	
Terminal box position:	6
Minimum efficiency index, MEI ≥:	0.70
Net weight:	233 kg
Gross weight:	302 kg
Shipping volume:	1.14 m ³
Sales region:	APAC
Config. file no:	92939111
Thrust handling device:	N

92959226 CRNE 155-1-1 V-F-A-E-HQQE

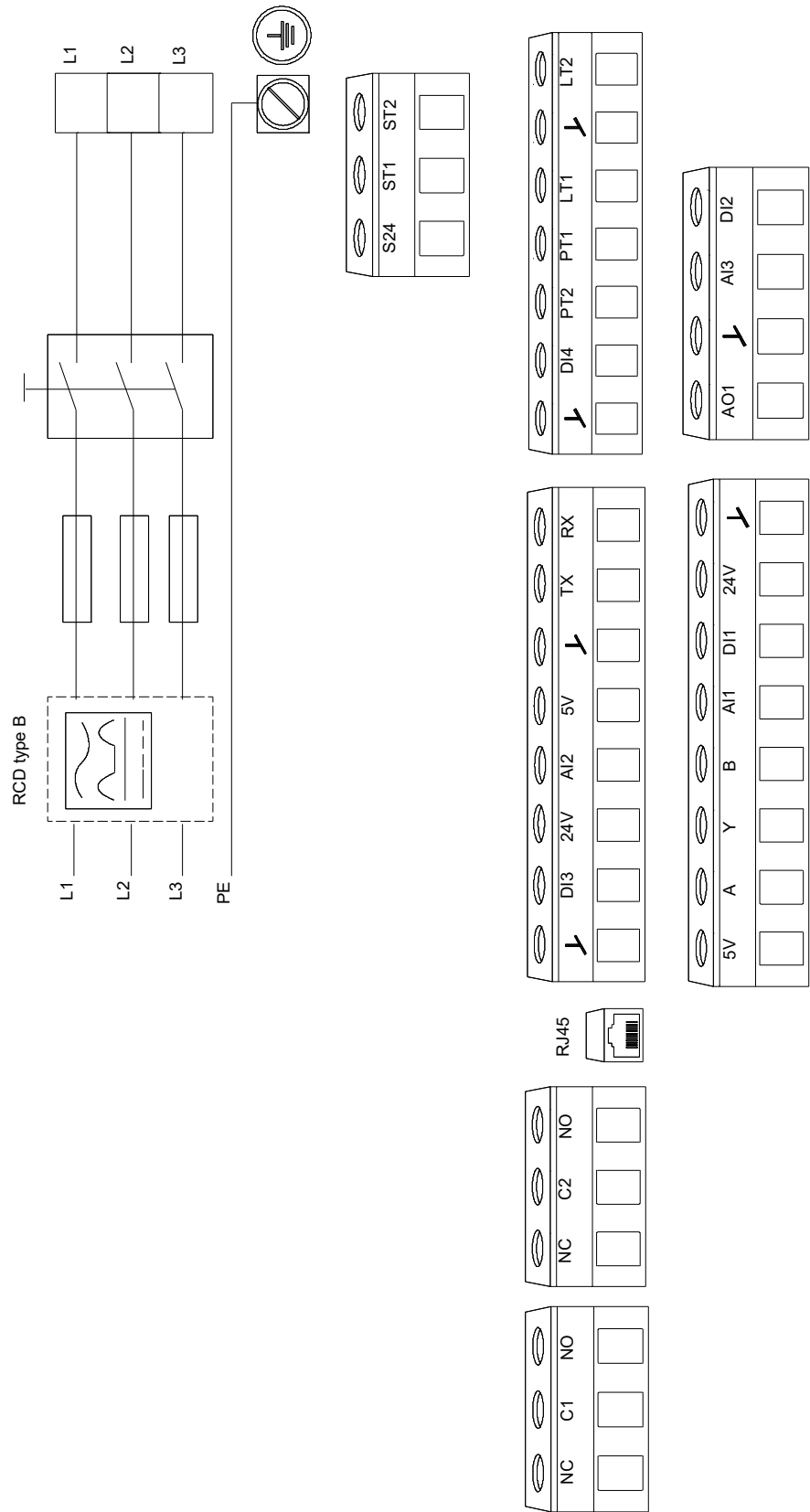


92959226 CRNE 155-1-1 V-F-A-E-HQQE



Note! All units are in [mm] unless others are stated.
Disclaimer: This simplified dimensional drawing does not show all details.

92959226 CRNE 155-1-1 V-F-A-E-HQQE



Note! All units are in [mm] unless others are stated.